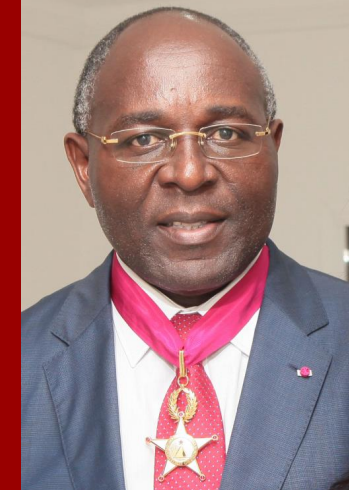


MINISTRY OF PUBLIC HEALTH

\*\*\*\*\*

**National Programme for the Control of Schistosomiasis and  
Intestinal Helminthiasis in Cameroon**



# **Control of Schistosomiasis in Cameroon: Precision Mapping and Sub-district Implementation**

**Prof. Louis-Albert TCHUEM TCHUENTE**

Programme Coordinator, NTD & GSA Ambassador

GSA and RNAS+ Schistosomiasis Meeting, Shanghai, 17-18 June 2024



# WHO Guideline - Recommendation 1

WHO GUIDELINE  
on control and elimination  
of human schistosomiasis



## Recommendation 1

In endemic communities with prevalence of *Schistosoma* spp. infection  $\geq 10\%$ , WHO recommends annual preventive chemotherapy with a single dose of praziquantel at  $\geq 75\%$  treatment coverage in all age groups from 2 years old, including adults, pregnant women after the first trimester and lactating women, to control schistosomiasis morbidity and advance towards eliminating the disease as a public health problem.

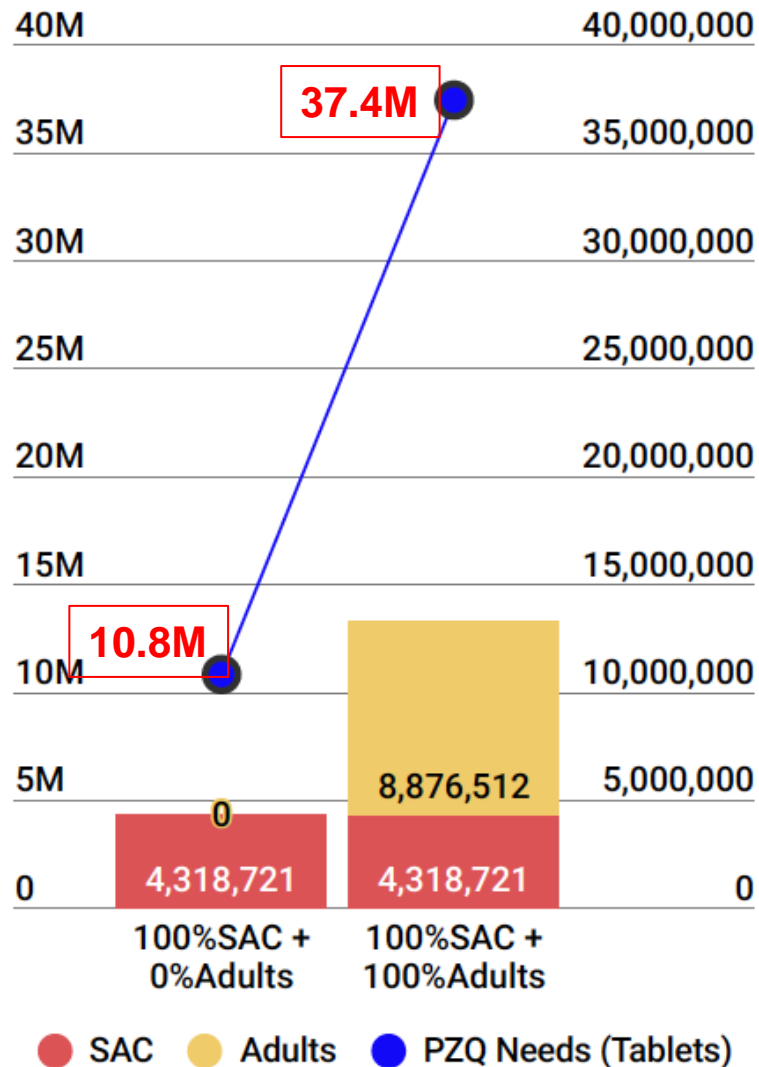
## This means:

- Expansion of treatment to **Preschool-aged children and Adults**
- **More health districts** eligible for annual treatments (MDA)
- **More drugs** - Praziquantel



# More People to Treat...

Estimation of Populations and  
PZQ Needs in 2022



Estimation of Total PZQ  
needed per Year:

Significant increase from **10.8**  
million tablets to **37.4** million

➔ High wastage of drugs



# Need for Precision Mapping...



→ Therefore, to avoid a wastage of drugs, it is urgent to complete precision mapping to appropriately choose communities (sub-districts) to treat

## VIEWPOINTS

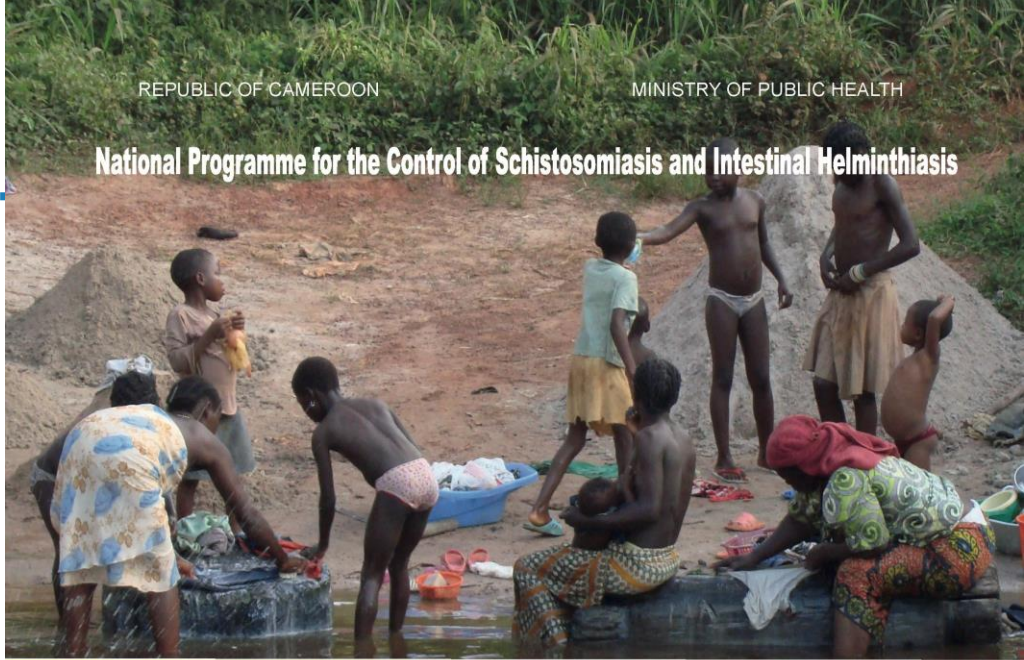
Precision mapping: An innovative tool and way forward to shrink the map, better target interventions, and accelerate toward the elimination of schistosomiasis

Louis-Albert Tchuem Tchuente<sup>1,2\*</sup>, J. Russell Stothard<sup>3</sup>, David Rollinson<sup>4</sup>, Jutta Reinhard-Rupp<sup>5</sup>





### National Programme for the Control of Schistosomiasis and Intestinal Helminthiasis



# Towards elimination of Schistosomiasis and Soil-Transmitted Helminthiasis in Cameroon

A road map for paradigm shift 2021-2030



## Road-Map 2021-2030

### With 7 Key Programmatic Actions

Complete precision mapping



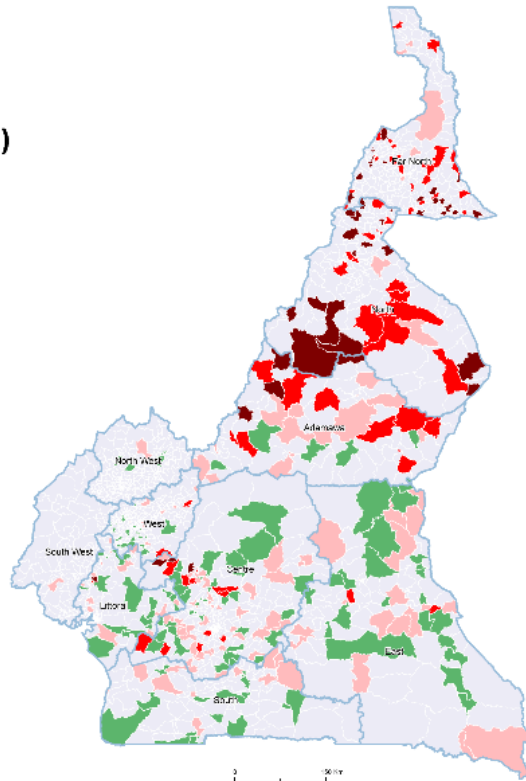




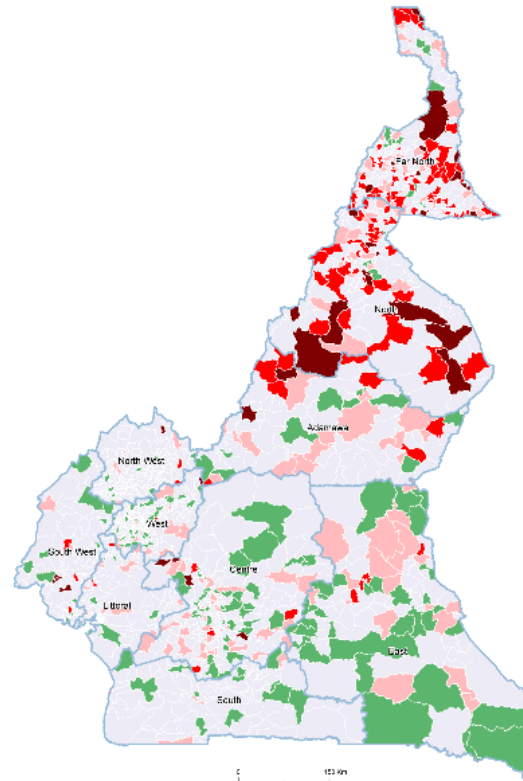
# Precision Mapping Gap

## SCH Prevalence (%)

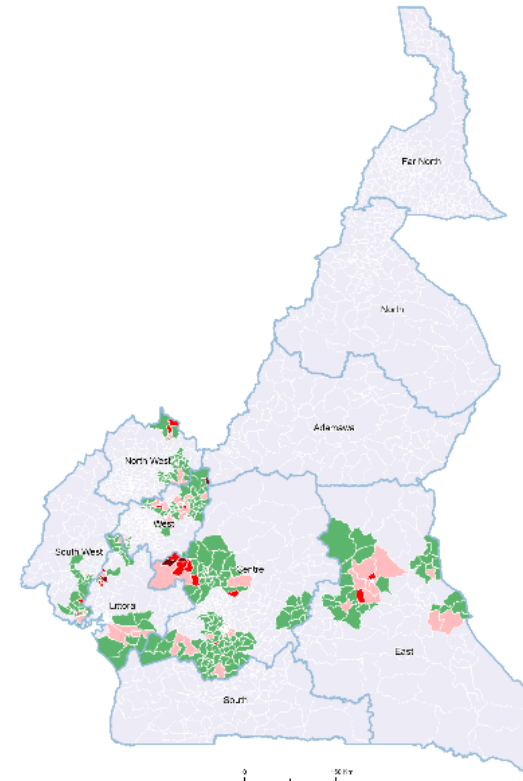
- 0 %
- 0.1 - 9.9 %
- 10 - 49.9 %
- ≥ 50 %
- NoData



1985



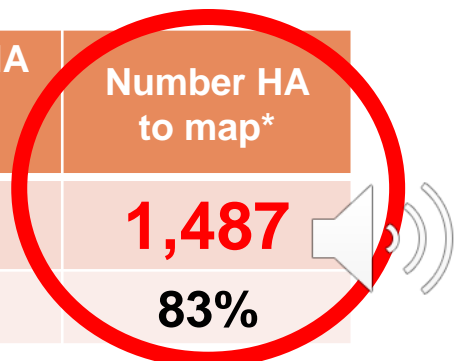
2010



2018

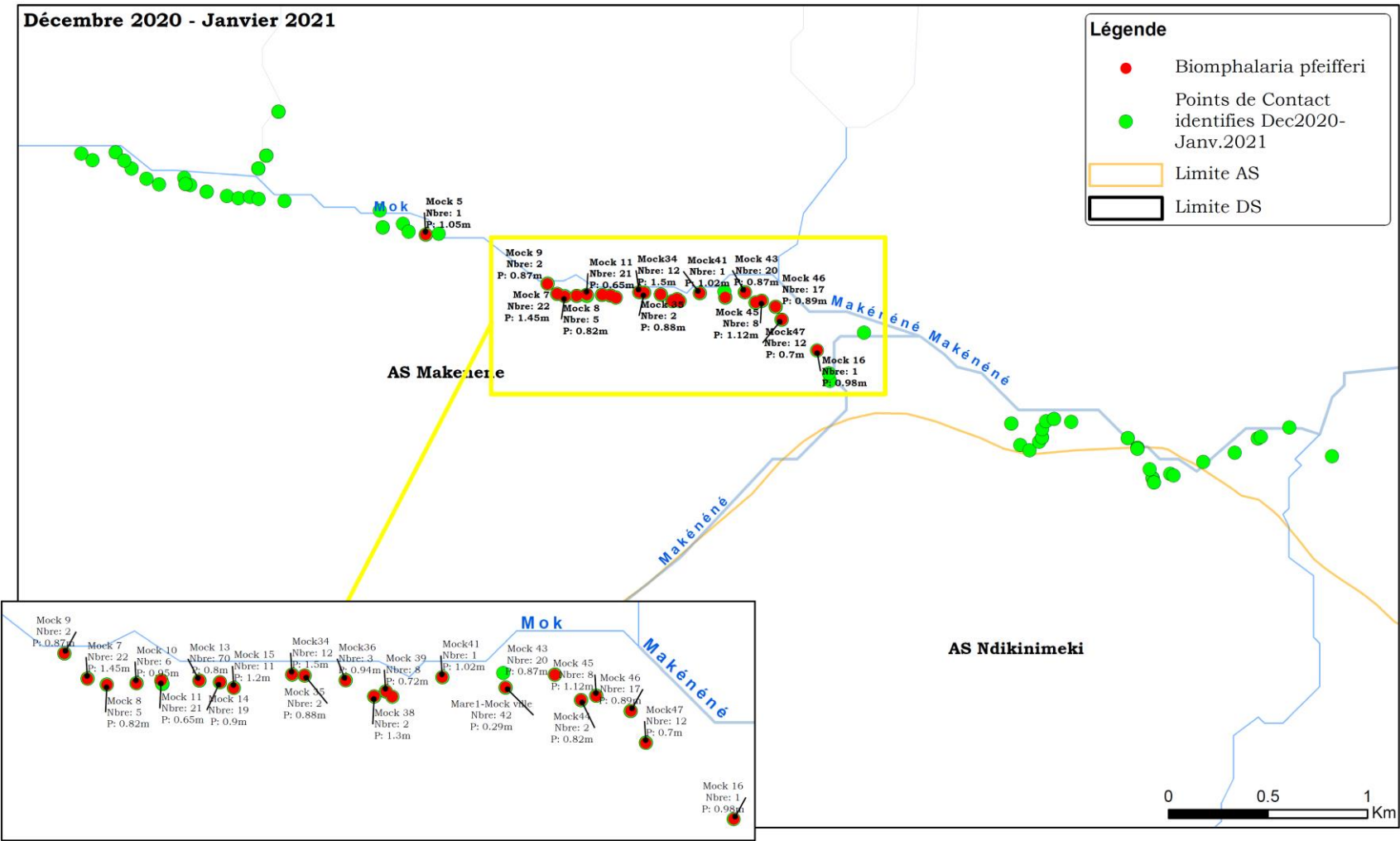
**Maps of SCH distribution by Health Areas, illustrating the mapping gaps**

	Number HD	Number HA	Number HA mapped in 1985	Number HA mapped in 2010	Number HA mapped in 2018	Number HA never mapped	Number HA to map*
<b>Total CAMEROON</b>	190	1,798	353	507	311	971	<b>1,487</b>
<b>Percentage (%)</b>			20%	28%	17%	54%	<b>83%</b>



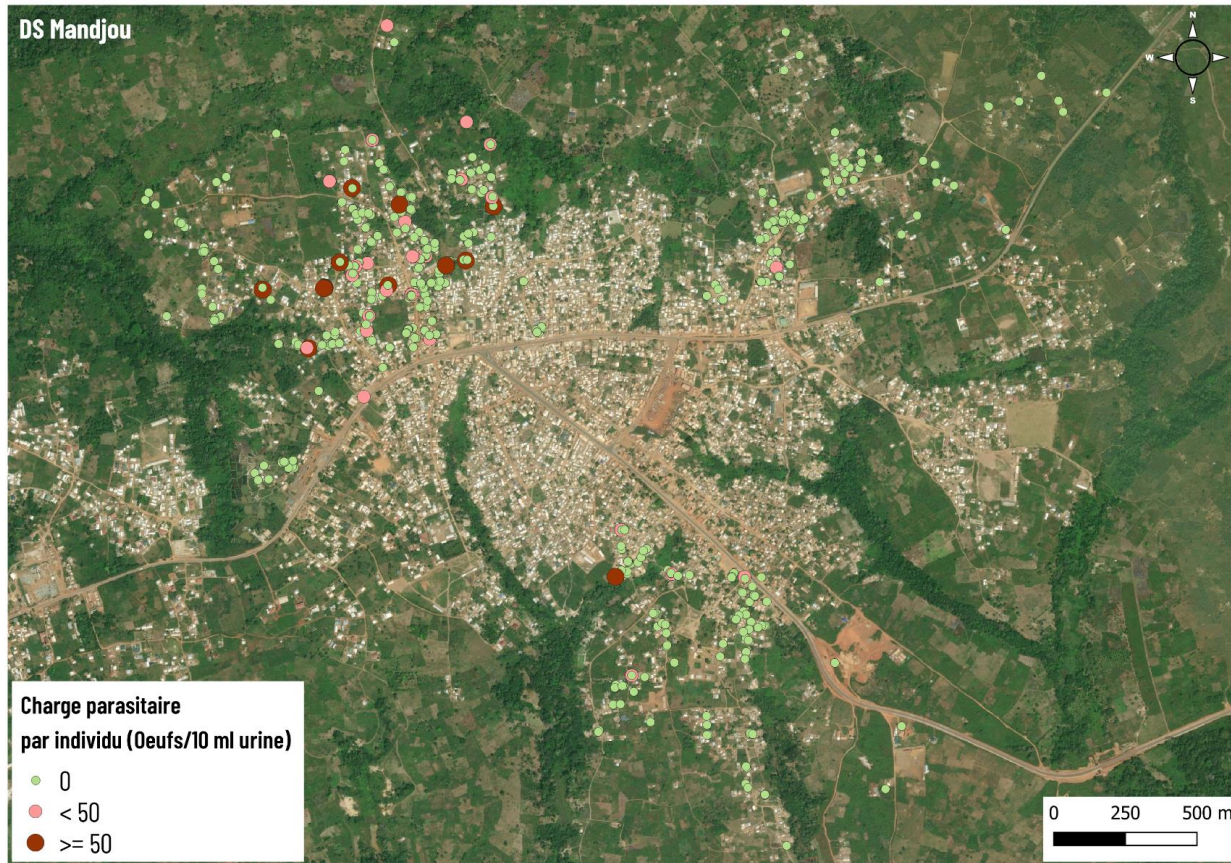
# Precision Mapping of Snails

To select sites for focal spraying of molluscicides (Niclosamide)

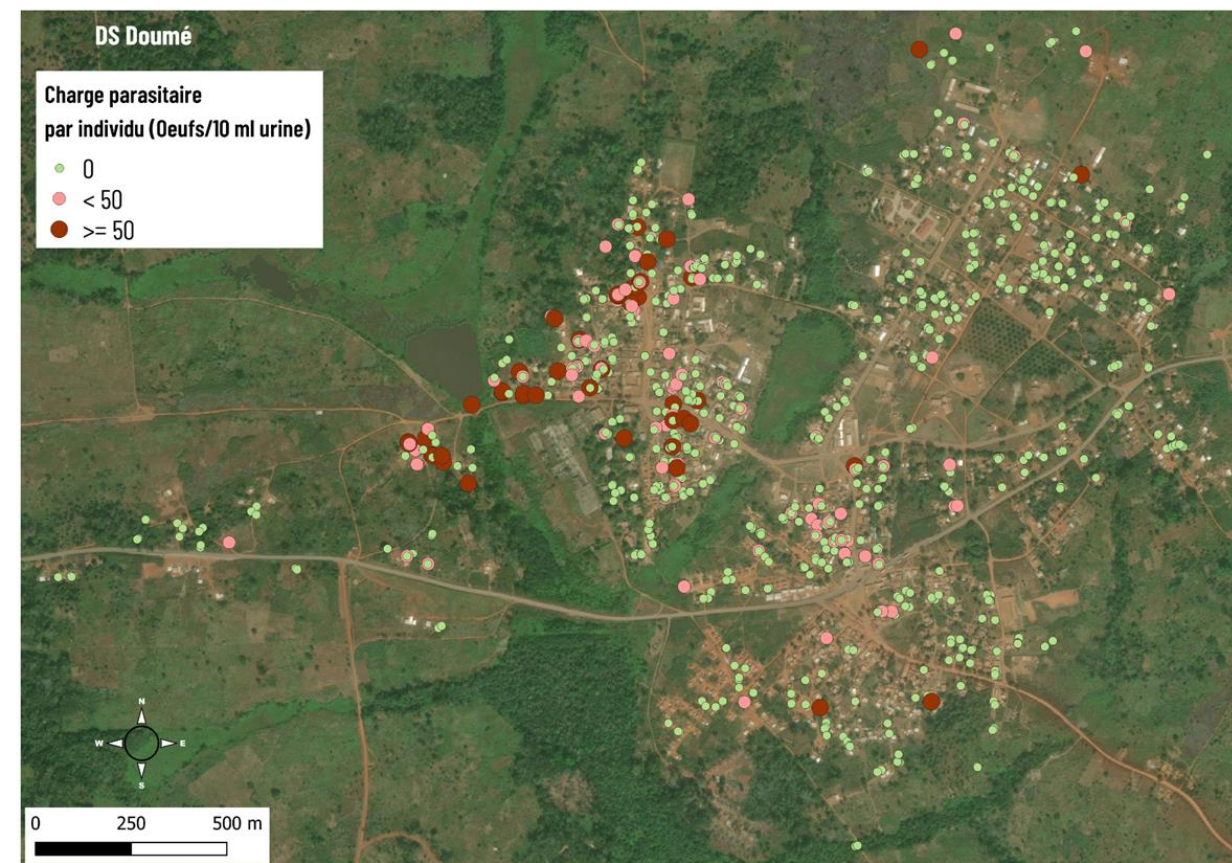




To identify households of women investigated for Female Genital SCH (FGS)



**Figure 1.** Schistosomiasis infection in communities in Bertoua HD.



**Figure 2.** Schistosomiasis infection in communities in Doumé HD.

**N.B.:** Each point represents the residential location of each woman investigated.

# Conclusion and Way Forward

**Precision Mapping** is a great tool to:

- Better understand SCH distribution for optimized interventions
- Enable a rationale use of drugs and resources

**Way forward:** Complete Precision Mapping in all Health Districts of Cameroon

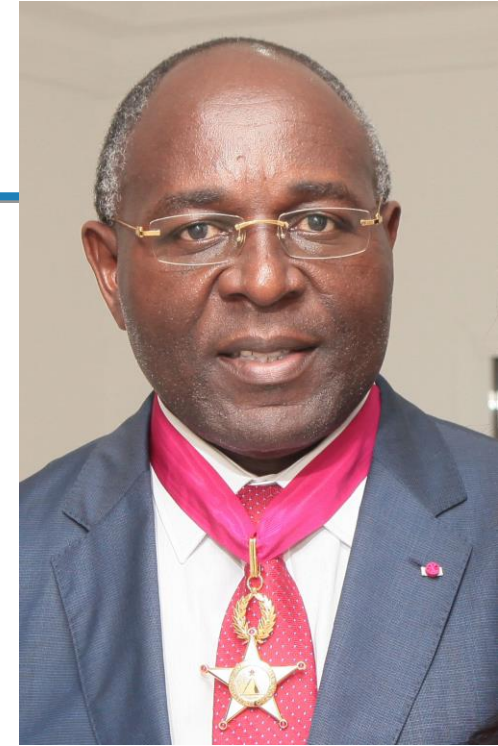




# Thank You

tchuemtchunte@schisto.com

@TchuemTchunte



**MINEDUB**



**MINESEC**



Perspective



**CENTRE SCHISTOSOMIASIS & PARASITOLOGY**  
Research and Control of Schistosomiasis and other Parasitic Diseases

